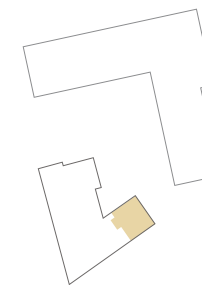
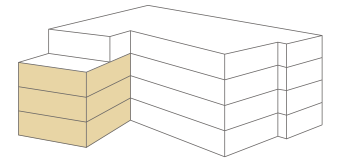


Floor Plans

Apartments 36 - 61

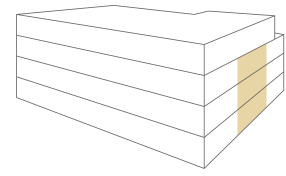
Ground, First & Second Floors Apartment 36, 42 & 49



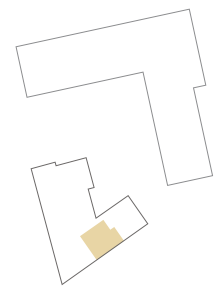
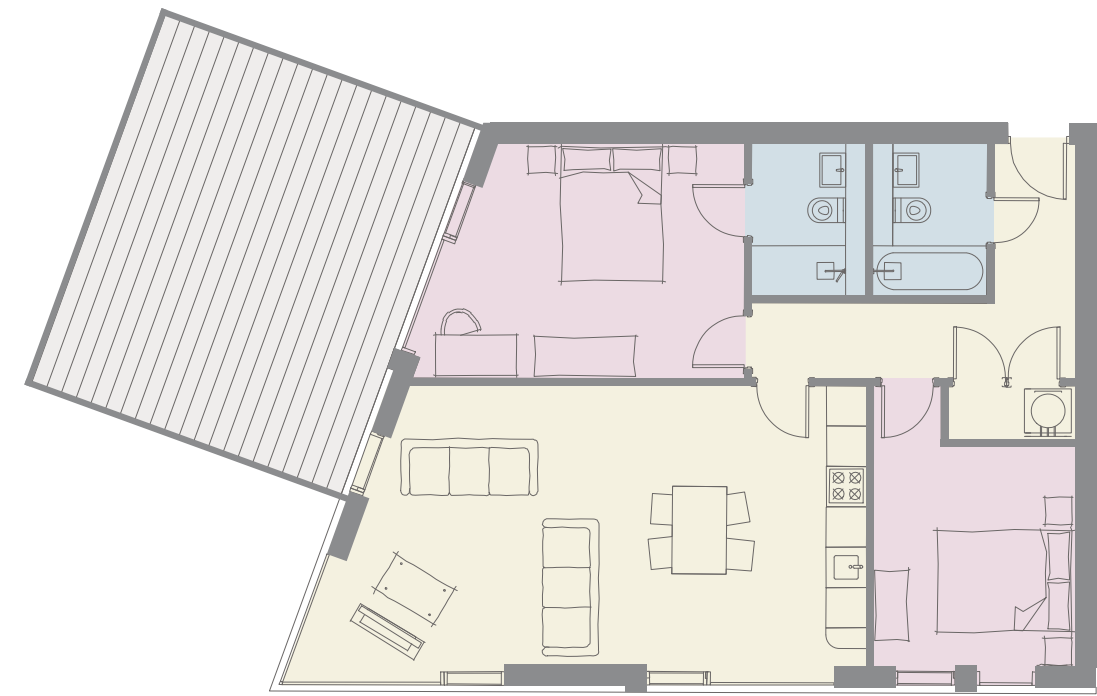
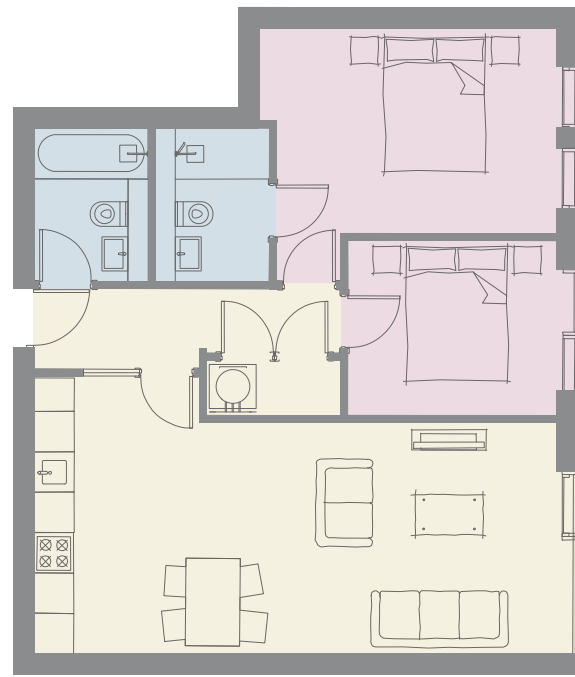
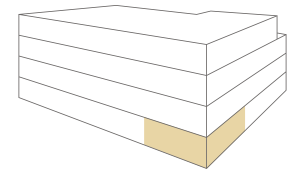
Living/Dining/Kitchen	30' 4" x 14' 8"
Bedroom 1	11' 4" x 11' 2"
En-Suite	7' 6" x 4' 7"
Bedroom 2	15' 1" x 11' 2"
Bathroom	7' 6" x 5' 7"

IMPORTANT NOTICE: As part of their policy of continuous product development Newby reserves the right to make alterations, amendments or additions to the development or any part of it without prior notice. The plans and dimensions therefore are subject to change and intended for guidance only. All dimensions shown are maximum sizes.

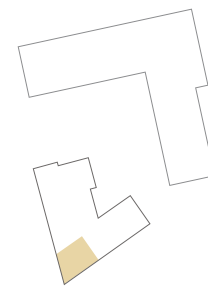
Ground, First & Second Floors
Apartment 37, 43 & 50



Ground Floor
Apartment 38



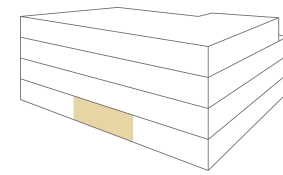
Living/Dining/Kitchen	25' 5" x 13' 6"
Bedroom 1	14' 5" x 12' 5"
En-Suite	7' 6" x 4' 7"
Bedroom 2	10' 1" x 8' 6"
Bathroom	7' 6" x 5' 7"



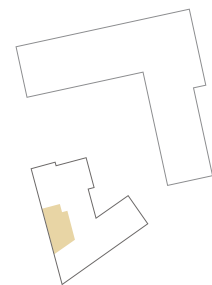
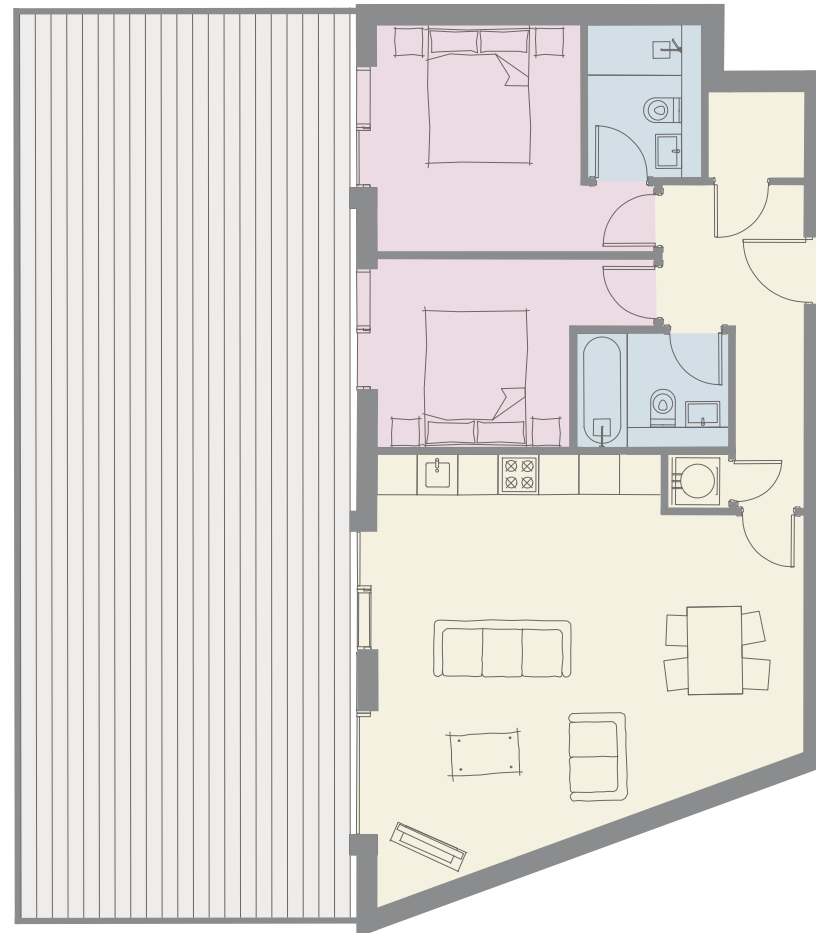
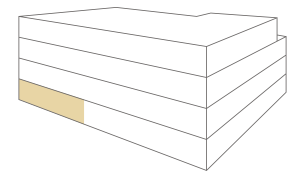
Living/Dining/Kitchen	27' 3" x 13' 7"
Bedroom 1	16' 2" x 11' 6"
En-Suite 1	7' 6" x 4' 7"
Bedroom 2	13' 7" x 9' 10"
Bathroom	7' 6" x 5' 7"

IMPORTANT NOTICE: As part of their policy of continuous product development Newby reserves the right to make alterations, amendments or additions to the development or any part of it without prior notice. The plans and dimensions therefore are subject to change and intended for guidance only. All dimensions shown are maximum sizes.

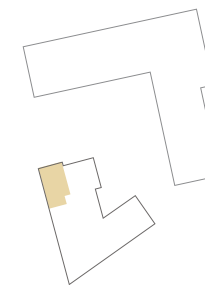
Ground Floor
Apartment 39



Ground Floor
Apartment 40



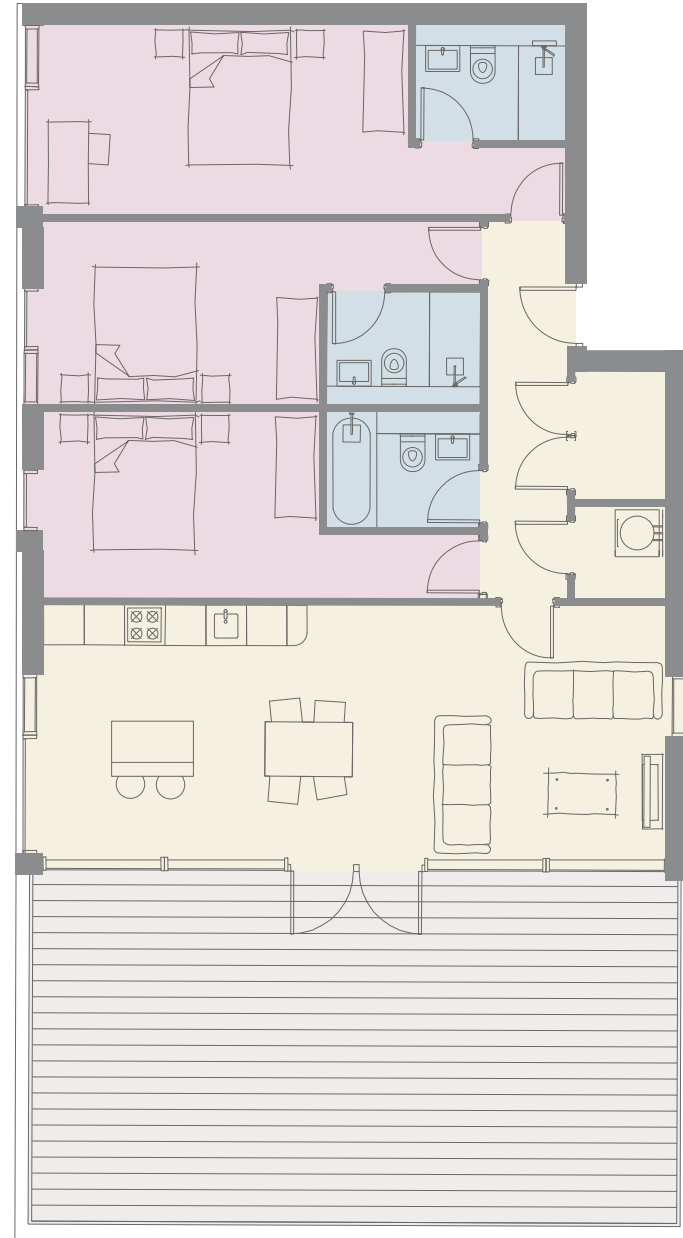
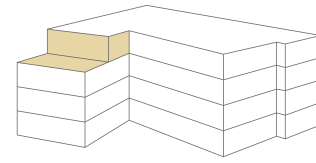
Living/Dining/Kitchen	22' 1" x 20' 9"
Bedroom 1	13' 7" x 11' 1"
En-Suite	7' 6" x 4' 7"
Bedroom 2	13' 7" x 9' 2"
Bathroom	7' 6" x 5' 7"



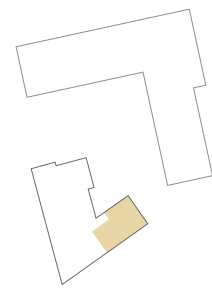
Living/Dining/Kitchen	20' 9" x 17' 0"
Bedroom 1	13' 7" x 11' 1"
En-Suite	7' 6" x 4' 7"
Bedroom 2	13' 7" x 9' 2"
Bathroom	7' 6" x 5' 7"

IMPORTANT NOTICE: As part of their policy of continuous product development Newby reserves the right to make alterations, amendments or additions to the development or any part of it without prior notice. The plans and dimensions therefore are subject to change and intended for guidance only. All dimensions shown are maximum sizes.

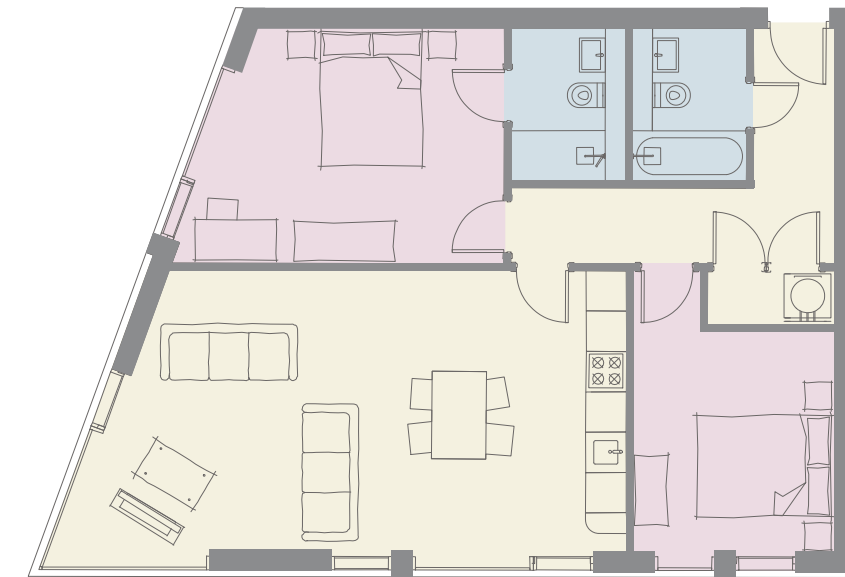
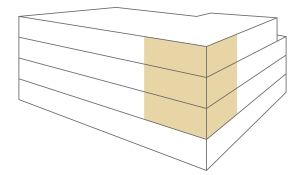
Third Floor
Apartment 56



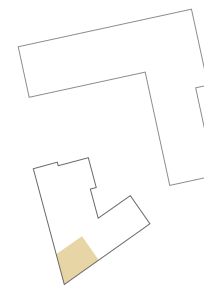
Living/Dining/Kitchen	30' 4" x 12' 2"
Bedroom 1	25' 5" x 9' 2"
En-Suite 1	7' 6" x 4' 7"
Bedroom 2	21' 2" x 9' 0"
En-Suite 2	7' 6" x 4' 7"
Bedroom 3	21' 2" x 9' 0"
Bathroom	7' 6" x 5' 7"



First, Second & Third Floors
Apartment 44, 51 & 57

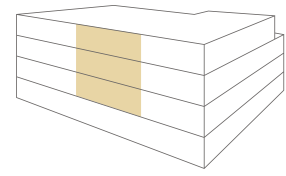


Living/Dining/Kitchen	27' 3" x 13' 7"
Bedroom 1	16' 2" x 11' 6"
En-Suite	7' 6" x 4' 7"
Bedroom 2	13' 7" x 9' 10"
Bathroom	7' 6" x 5' 7"

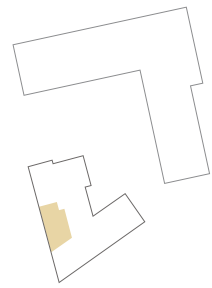
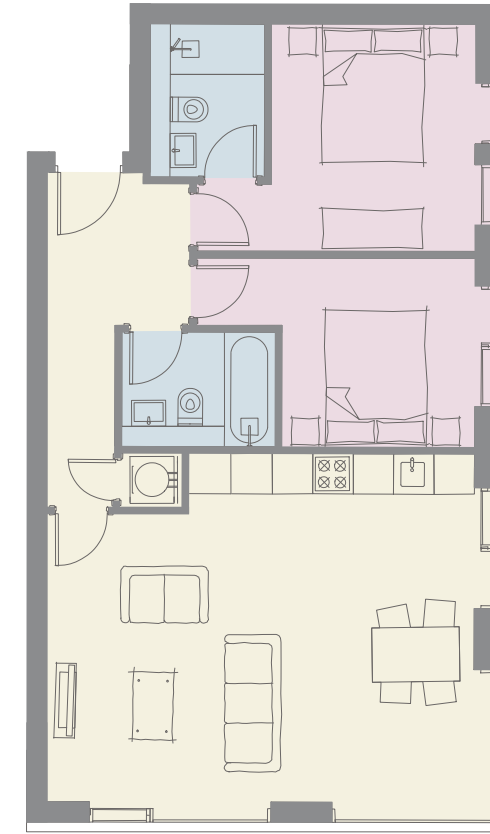
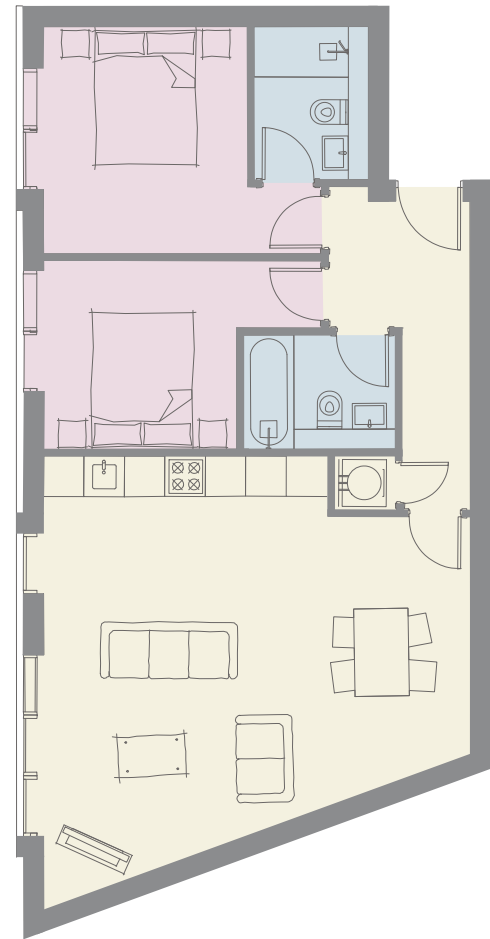
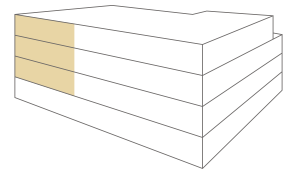


IMPORTANT NOTICE: As part of their policy of continuous product development Newby reserves the right to make alterations, amendments or additions to the development or any part of it without prior notice. The plans and dimensions therefore are subject to change and intended for guidance only. All dimensions shown are maximum sizes.

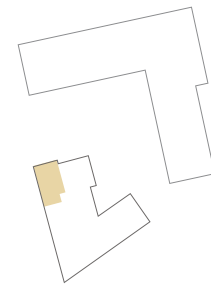
First, Second & Third Floors
Apartment 45, 52 & 58



First, Second & Third Floors
Apartment 46, 53 & 59



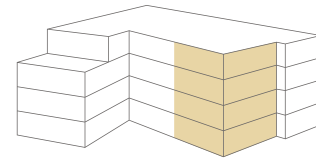
Living/Dining/Kitchen	22' 1" x 20' 9"
Bedroom 1	13' 7" x 11' 1"
En-Suite	7' 6" x 4' 7"
Bedroom 2	13' 7" x 9' 2"
Bathroom	7' 6" x 5' 7"



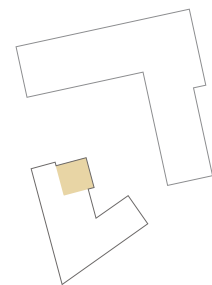
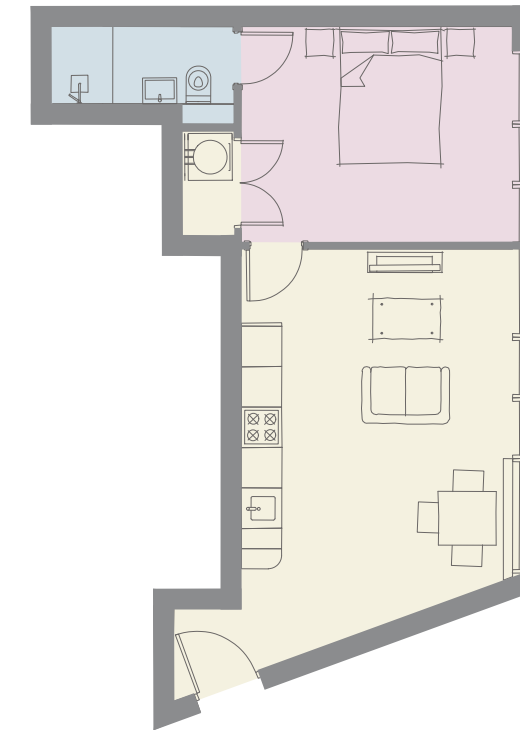
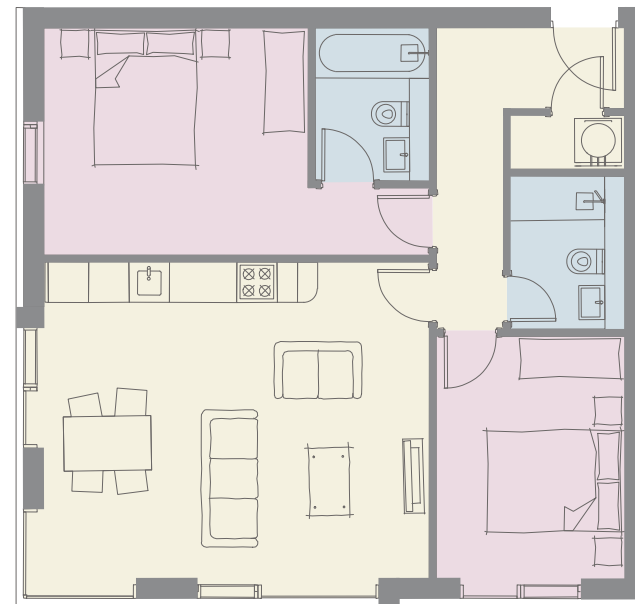
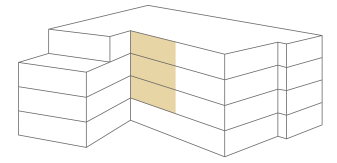
Living/Dining/Kitchen	20' 9" x 17' 0"
Bedroom 1	13' 7" x 11' 1"
En-Suite	7' 6" x 4' 7"
Bedroom 2	13' 7" x 9' 2"
Bathroom	7' 6" x 5' 7"

IMPORTANT NOTICE: As part of their policy of continuous product development Newby reserves the right to make alterations, amendments or additions to the development or any part of it without prior notice. The plans and dimensions therefore are subject to change and intended for guidance only. All dimensions shown are maximum sizes.

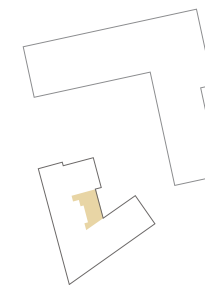
First, Second & Third Floors
Apartment 41, 47, 54 & 60



First, Second & Third Floors
Apartment 48, 55 & 61



Living/Dining/Kitchen	18' 10" x 15' 5"
Bedroom 1	18' 10" x 11' 1"
En-Suite	7' 6" x 5' 7"
Bedroom 2	11' 10" x 9' 2"
Bathroom	7' 6" x 5' 7"



Living/Dining/Kitchen	21' 11" x 16' 6"
Bedroom	13' 3" x 10' 6"
En-Suite	8' 10" x 3' 9"

IMPORTANT NOTICE: As part of their policy of continuous product development Newby reserves the right to make alterations, amendments or additions to the development or any part of it without prior notice. The plans and dimensions therefore are subject to change and intended for guidance only. All dimensions shown are maximum sizes.

NEWBY

springfieldcourtharrogate.co.uk
newby.co.uk



01423 503076
nichollstyreman.com

Important Notice

The details contained in this brochure are for guidance only. All photographs, illustrations, plans and sizes indicated only give a general indication of the proposed development. Newby operate a policy of continuous development and features, specifications and elevational treatments may vary. We reserve the right to alter any part of the development. Particulars described in this brochure should not be relied upon as accurately describing any specific matters. This information does not constitute a contract, part of contract or warranty.